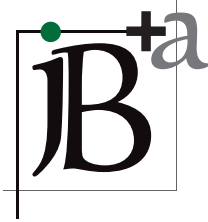


News

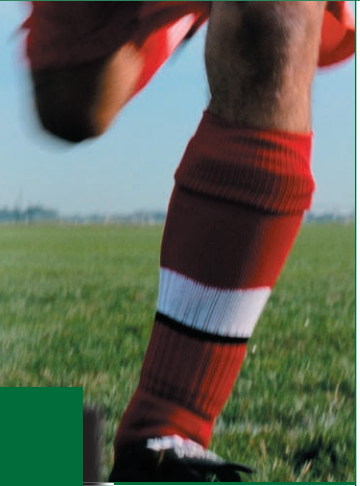


700 Galleria Parkway
 Suite 400
 Atlanta, Georgia 30339
 770.803.0900
 770.805.0903 fax
 www.jbplusa.com

planning + landscape architecture

creating
 dynamic
outdoor
 environments

AWARD WINNING PARKS!
 Suwanee Town Center Park receives
 ASLA design award!
 Visit our newly re-designed website at www.jbplusa.com



City Park, Lilburn, GA



Interactive Fountain, Suwanee, GA



Jamestown Park, College Park, GA

**MAKING CITY PARKS
 THAT WORK**

Double digit growth throughout metro Atlanta is paving the way for area communities to link transportation improvements with land use development strategies. Implementing these strategies creates sustainable and livable communities. Many of these growth initiatives are being jump-started with financial assistance from Georgia Department of Transportation Enhancement program and Atlanta Regional Commission Livable Community initiative grants (see side bar).

A critical component to many of the proposed plans is public space, including active and passive parks. jB+a is a recognized leader in park design. The firm strives to maximize available lands while balancing the design elements against the practical issues of sustainable development. jB+a is currently partnering with several communities to design creative urban and town center parks.

- This Issue**
- Making City Parks That Work**
 - Lilburn City Park
 - Suwanee Interactive Fountain
 - Jamestown Park, College Park
 - Project Funding**
 - Historic Landscapes**
 - Glen Emerald
 - Vinings Trolley Line
 - Sweetwater Creek State Park**
 - Marietta Trees Master Plan**

Funding plays a vital role in enhancing a community's resources. jB+a is assisting communities throughout Georgia to secure and utilize a variety of project funding types. Some of the available options include:

- LCI (Livable Centers Initiative) administered by the ARC.
- TE (Transportation Enhancement) Federal Grant administered through the Georgia DOT.
- RBEG (Rural Business Enterprise Grants) offered by the USDA Dept. of Rural Development.
- CDBG (Community Development Block Grant) Federal Grant administered through DCA.
- SPLOST (Special Local Option Sales Tax) a voter initiated and approved self-imposed tax.

NEW APPRECIATION FOR HISTORIC LANDSCAPES

Throughout the 20th century Atlanta and the Southeast have experienced the same growing pains as many other cities across the country. With urban sprawl, businesses and residents have migrated to the fringes of the city and land is rapidly being bought up and developed. As a result, many downtown areas have experienced a significant decline during the last half of the 20th century, with many of our historic places falling prey to the bulldozer.



Glen Emerald Park, Decatur, GA

Renewed awareness and appreciation of the importance of preserving historic landscapes and reviving urban environments has begun to reverse this trend.



Trolley Line Park, Vinings, GA

jB+a is fostering this awareness by working on several projects of historic significance. One of jB+a's primary goals is to reach out to the community and make citizens aware of the importance of preservation. These cultural and historic assets are a significant part of a community's heritage, education and economic base. "Preserving our heritage fosters civic pride in the beauty and accomplishments of the past that we all share," states jB+a Senior Designer, Raigan Carr. Protection and enhancement of historic buildings and sites is a necessary component of the social and economic prosperity of our community. The preservation and adaptive re-use of historic buildings provides a continuing economic base by promoting tourism. The goal for jB+a is to help save the most visible reminders of our past as a people: our historic places.

PRESERVING TREES FOR FUTURE GENERATIONS

jB+a has been commissioned to work with the City of Marietta for master planning services as part of a campaign to beautify the city. A grant from the Georgia Forestry Commission will allow Marietta to implement "Trees for Tomorrow," a comprehensive program to preserve and replace trees across the city. jB+a will inventory existing trees, analyze their condition, and assist the city in creating a thorough plan - including concepts, replacement schedules, and costs - to improve major corridors throughout the city.

SWEETWATER CREEK DESIGN EARNS **GREEN** AWARD

The recently completed Sweetwater State Park Visitor Center in Lithia Springs is being lauded for its sustainable design. The Center was highlighted in the March 2006 issue of Landscape Architect and Specifier News, and was a "Top Pick" at the 2004 AIA Green Design Showcase. jB+a partnered with Gerding Architects and the Department of Natural Resources to create an environment that includes numerous visitor education elements including:

- a water-efficient landscape with plant material that is native and tolerant of the regional climate; the need for irrigation has been reduced to nearly zero.
- composting toilets that use biological decomposition, reducing solid waste volume by 90 percent. The resulting solid compost resembles topsoil and is a useful soil conditioner. It's high in nitrogen and makes a highly effective fertilizer.
- a demonstration garden.
- underground rainwater cisterns, and accessible green roof and roof-top garden.

The Visitor Center has also earned Platinum LEED certification from the U.S. Green Building Council, making it the first Platinum Certified building in Georgia.



jB+a, inc.
700 Galleria Parkway
Suite 400
Atlanta, Georgia 30339
www.parkdesignstudio.net

Recent Project Awards

- Newton County - *On Call L.A. Services*
- Paulding County - *Burnt Hickory Park*
- Marietta - *Henry Park & On Call Services*
- Smyrna
*Rose Garden Park, Lake Court Park
Jonquil Park, Oakdale Park*
- Spalding County - *Dundee Lake Park*
- West Point - *Downtown & River Parks*
- Gwinnett County - *Settles Bridge Park*
- Mt. Bethel Academy - *Pigeon River Park*
- Trust for Public Land Greenprints
*McIntosh County, Camden County
Harris Neck Island, Beaufort County*
- Dekalb County - *Wade Walker Aquatic*

